

Mary's Nutritionals Elite Transdermal Patch



POTENCY REPORT

Material Tested: ELITE CBD PATCH
Testing Method: UPLC-DAD
Date Tested: 05/31/2018
Batch Number: F0521848
Testing Analyst: Ben Dennis Reviewed by Jeremy Riggle PHD
Total Product Mass: 1 GRAM

ACIDIC COMPOUND mg/unit

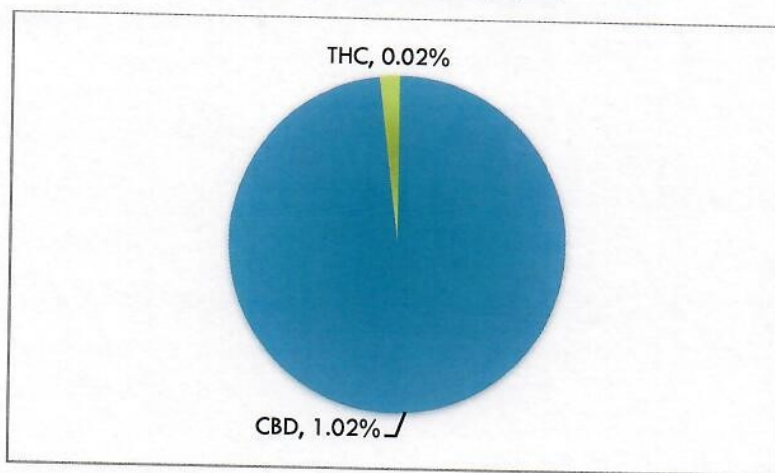
CBDA <0.1%
THCA <0.1%
CBCA <0.1%
CBGA <0.1%
CBNA <0.1%
THCVA <0.1%
CBDVA <0.1%

NEUTRAL COMPOUND mg/unit

CBD 1.02%
THC <0.1%
CBC <0.1%
CBG <0.1%
CBN <0.1%
THCV <0.1%
CBDV <0.1%



Cannabinoid Content (wt/wt)



Mary's Nutritionals, LLC is a wholly owned subsidiary of Mary's Medicinals, LLC. Information provided in this report is for CBD rich hemp cultivated by Elite Botanicals, Loveland CO.



Mary's Nutritionals The Remedy

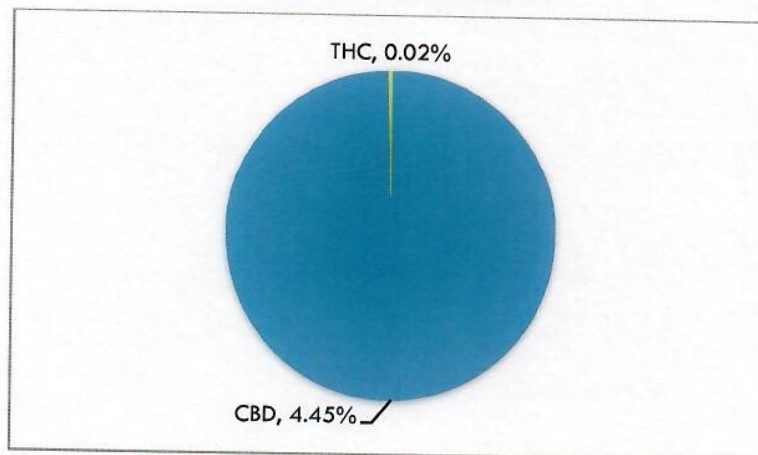
MARY'S
nutrionals

POTENCY REPORT

Material Tested: Remedy Tincture
Testing Method: UPLC-DAD
Date Tested: 04/27/2018
Batch Number: D0330850
Testing Analyst: Ben Dennis; Reviewed by: Jeremy Riggle PhD
Total Product Mass: 12.5 grams

ACIDIC COMPOUND mg/unit		NEUTRAL COMPOUND mg/unit	
CBDA	<0.1%	CBD	4.45%
THCA	<0.1%	THC	<0.1%
CBCA	<0.1%	CBC	<0.1%
CBGA	<0.1%	CBG	<0.1%
CBNA	<0.1%	CBN	<0.1%
THCVA	<0.1%	THCV	<0.1%
CBDVA	<0.1%	CBDV	<0.1%

Cannabinoid Content (wt/wt)



Mary's Nutritionals, LLC is a wholly owned subsidiary of Mary's Medicinals, LLC. Information provided in this report is for CBD rich hemp cultivated by Elite Botanicals, Loveland CO.



Mary's Nutritionals Elite Compound²



POTENCY REPORT-WT/WT%

Material Tested: **COMPOUND**

Testing Method: UPLC-DAD

Date Tested 08/2/2018

Batch Number B0727847

Testing Analyst Benjamin Dennis Reviewed by Jeremy Riggle, PhD

Total Product Mass 28 grams

ACIDIC COMPOUND mg/unit

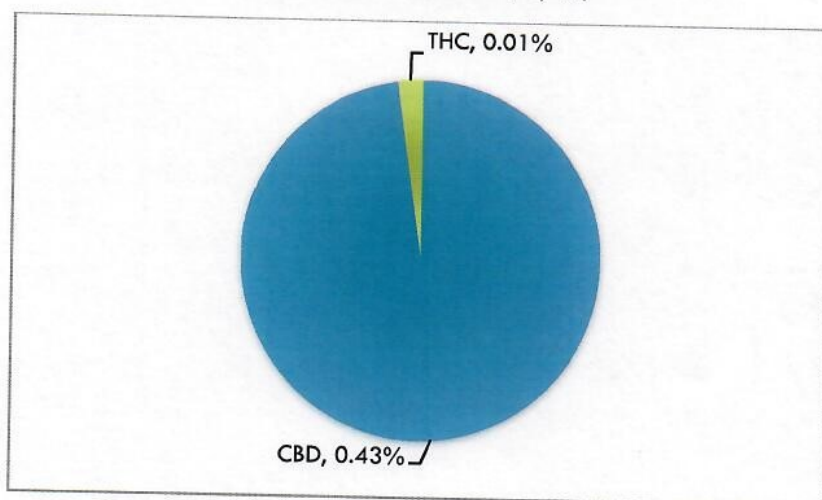
CBDA	<0.1%
THCA	<0.1%
CBCA	<0.1%
CBGA	<0.1%
CBNA	<0.1%
THCVA	<0.1%
CBDVA	<0.1%

NEUTRAL COMPOUND mg/unit

CBD	0.43%
THC	<0.01%
CBC	<0.1%
CBG	<0.1%
CBN	<0.1%
THCV	<0.1%
CBDV	<0.1%



Cannabinoid Content (wt/wt)



Mary's Nutritionals, LLC is a wholly owned subsidiary of Mary's Medicinals, LLC. Information provided in this report is for CBD rich hemp cultivated by Elite Botanicals, Loveland CO.



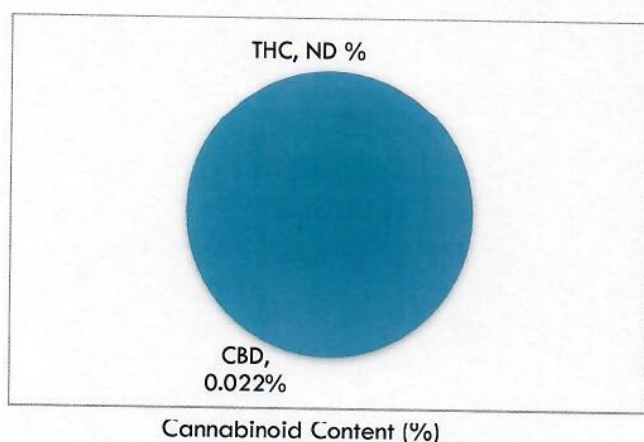
Mary's Nutritionals Polish Sea Salt Body Scrub

MARY'STM
nutraceuticals

POTENCY REPORT-(M/M)%

Material Tested: Salt Scrub (50 mg)
Testing Method: HPLC-DAD
Date Tested: 04/19/2019
Batch Number: U0417908
Testing Analyst: Ben Dennis; Reviewed by Jeremy Riggle, Ph.D.
Total Product Mass: 224 grams
Manufactured date: 04/17/2019

ACIDIC COMPOUND (%)		NEUTRAL COMPOUND (%)	
CBDA	<0.1%	CBD	0.022%
THCA	<0.1%	THC	<0.1%
CBCA	<0.1%	CBC	<0.1%
CBGA	<0.1%	CBG	<0.1%
CBNA	<0.1%	CBN	<0.1%
THCVA	<0.1%	THCV	<0.1%
CBDVA	<0.1%	CBDV	<0.1%



Jeremy Riggle, Ph.D.
Chief Scientist

*These percentages are
equal to 49.61 mg of CBD
and None Detected mg
THC per unit.

Jeremy Riggle

Mary's Nutritionals, LLC is a wholly owned subsidiary of Mary's Medicinals, LLC. Information provided in this report is for CBD rich hemp cultivated by Elite Botanicals, Loveland CO.



Mary's Nutritionals Elite Transdermal Pen



POTENCY REPORT-WT/WT%

Material Tested: Elite CBD Pen
Testing Method: UPLC-DAD
Date Tested 07/27/2018
Batch Number C0726836
Testing Analyst Benjamin Dennis Reviewed by Jeremy Riggle, PhD
Total Product Mass 6.25 grams

ACIDIC COMPOUND mg/unit

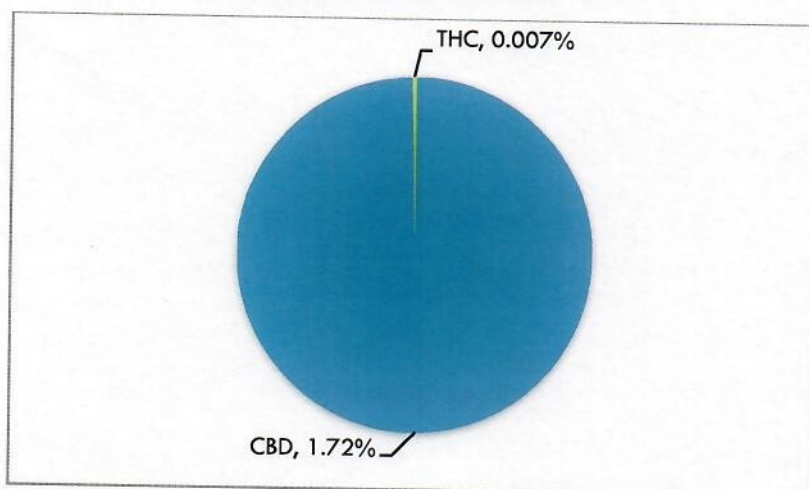
CBDA	<0.1%
THCA	<0.1%
CBCA	<0.1%
CBGA	<0.1%
CBNA	<0.1%
THCVA	<0.1%
CBDVA	<0.1%

NEUTRAL COMPOUND mg/unit

CBD	1.72%
THC	<0.1%
CBC	<0.1%
CBG	<0.1%
CBN	<0.1%
THCV	<0.1%
CBDV	<0.1%



Cannabinoid Content (wt/wt)



Mary's Nutritionals, LLC is a wholly owned subsidiary of Mary's Medicinals, LLC. Information provided in this report is for CBD rich hemp cultivated by Elite Botanicals, Loveland CO.



Mary's Nutritionals Whole Pet Gel Pen⁸

MARY'S
nutrionals

POTENCY REPORT

Material Tested: Pet Pen CBD
Testing Method: UPLC-DAD
Date Tested: 03/20/2017
Batch Number: H0306815
Testing Analyst: Jessica Reedy; Reviewed by: Jeremy Riggle PhD
Total Product Mass: 8.5g

ACIDIC
COMPOUND mg/unit

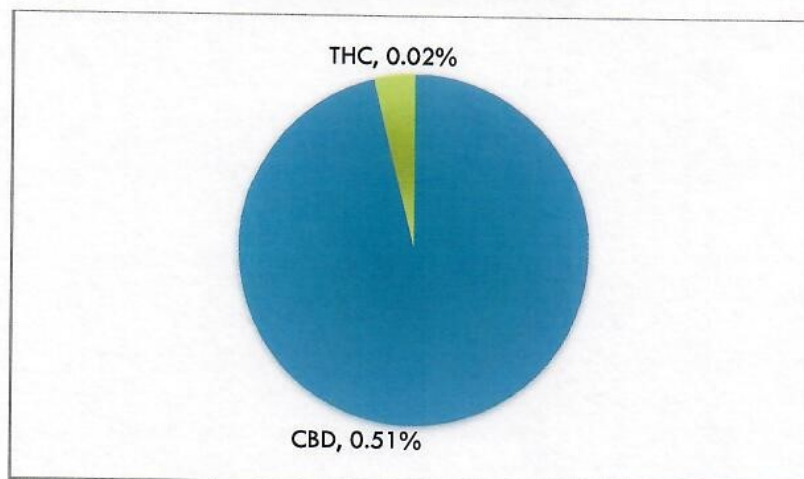
CBDA <0.1%
THCA <0.1%
CBCA <0.1%
CBGA <0.1%
CBNA <0.1%
THCVA <0.1%
CBDVA <0.1%

NEUTRAL
COMPOUND mg/unit

CBD 0.51%
THC <0.1%
CBC <0.1%
CBG <0.1%
CBN <0.1%
THCV <0.1%
CBDV <0.1%



Cannabinoid Content (wt/wt)



Mary's Nutritionals, LLC is a wholly owned subsidiary of Mary's Medicinals, LLC. Information provided in this report is for CBD rich hemp cultivated by Elite Botanicals, Loveland CO.

